

Programmes in Built Environment

Gateway to Professional Recognitions

Diploma to Master's Degree for secondary school leavers & industrial practitioners

Building Construction & Surveying

Diploma in Professional Studies (Building Technology)

Higher Diploma in Building Technology

BSc (Hons) Construction Project Management*
(Registration Number: 251152)

MSc Construction Project Management*
(Registration Number: 252849)

Health, Safety and Environment

MSc Health and Safety^ (Registration Number: 253047)

Property & Facilities Management

BSc (Hons) Facilities Management*
(Registration Number: 250793)

Content

Diploma in Professional Studies (Building Technology)	Page 4-5
Higher Diploma in Building Technology	Page 6-7
BSc (Hons) Facilities Management* (Registration Number: 250793)	Page 8-9
BSc (Hons) Construction Project Management* (Registration Number: 251152)	Page 10-11
MSc Construction Project Management* (Registration Number: 252849)	Page 12-13
MSc Health and Safety^ (Registration Number: 253047)	Page 14-15



Hong Kong College of Technology

Centre of International Education

香港專業進修學校國際教育中心

Hong Kong College of Technology (HKCT) is a charitable and independent post-secondary education institution under the HKCT Group Limited. Formerly known as the Mongkok Workers' Night School, which was established in 1947, HKCT has striven continuously to contribute to the local education for over 75 years.

Centre of International Education (CIE) is a branch under HKCT, which carries the missions of promoting life-long learning by providing top-notch academic programmes ranging from Diploma to Master's Degree from world class institutions to keep abreast with the dynamic changes of the world. Programme disciplines include Building Construction & Surveying, Civil Engineering, Electrical & Mechanical Engineering, Property & Facilities Management, Health, Safety and Environment, Graphic Design, Information Technology and Beauty Services.

CIE also collaborates with local professional bodies and overseas institutions to organise seminars and conferences to facilitate academic exchanges and sharpen competency of workforce, strengthen the territory's competitive edges to embrace dynamic changes brought by globalisation.

Professional and academic services at CIE include:

- Professional local and overseas programmes, short courses and seminars;
- National and international conferences;
- Knowledge transfer between Hong Kong and overseas academics or professionals;
- Liaison with local/overseas institutions and professional bodies.



Part-time 1 year

This programme admits students in September, January and May every year.

Introduction

Diploma in Professional Studies (Building Technology) is a one-year part-time programme providing the foundation for further study in the field of building and construction.

Entry Requirements

- Applicants should have completed F.5 with a pass in Mathematics; or
- Applicants should have Certificate in Building and Construction related discipline; or
- Mature entrants with relevant working experience; or equivalent.

Career Prospects

Graduates of the diploma programme are equipped with fundamental knowledge to be technicians or foreman in the area of Building and Construction.



Programme Structure

Module*	Commencement	Tuition Fee [^]
<ul style="list-style-type: none"> Elementary Engineering Mathematics Effective Use of English 	September	HK\$6,200
<ul style="list-style-type: none"> Construction Science Introduction to Environmental Science 	January	HK\$6,100
<ul style="list-style-type: none"> Building Measurement Engineering Communication Graphics 	May	HK\$6,100

[^] All tuition fees are subject to annual review and change without prior notice.

* Course content is subject to review and changes without prior notice.

Articulation Pathway

MSc Construction Project Management* (Registration Number: 252849)
(Part-time minimum 2 years)



BSc (Hons) Facilities Management* (Registration Number: 250793)
(Part-time minimum 15 months)



BSc (Hons) Construction Project Management*
(Registration Number: 251152)
(Part-time minimum 15 months)



Higher Diploma in Building Technology
(Part-time 2 years)



Diploma in Professional Studies (Building Technology)
(Part-time 1 year)



* This programme is operated by Hong Kong College of Technology International Limited and awarded by University of Central Lancashire, UK.

* It is a matter of discretion for individual employers to recognise any qualification to which this course may lead.

Part-time 2 years

This programme admits students in September, January and May every year.

Introduction

Higher Diploma in Building Technology is a two-year part-time programme providing academic pathway in relevant disciplines to obtain higher level of qualification.

Professional Recognition



- This part-time programme is accredited by **Chartered Association of Building Engineers (CABE)** and **Hong Kong Institute of Construction Managers (HKICM)**. Graduates who fulfil the specified education with adequate working experience requirements are eligible to apply for Student or Associate Membership of CIOB, CABE and HKICM.
- This programme is also accredited by **The Institute of Clerks of Works, UK (ICWCI)**, **The Institute of Clerks of Works, Hong Kong (HKICW)**. Graduates who fulfil relevant working experience are eligible to apply for Membership of ICWCI and HKICW.

Entry Requirements

- Applicants should be holders of Ordinary Certificate or Diploma in Building related disciplines; or
- Mature entrants aged 23 or above and have relevant working experience.
- Holders of Higher Certificate in Building-related disciplines; or Advanced Course for Clerks of Works; or equivalent may apply for admission into Year 2.



Programme Structure (Year 1)

Module ⁺	Commencement	Tuition Fee [^]
<ul style="list-style-type: none"> Elementary Construction Technology and Design Studies Construction Materials and Environmental Science 	September	HK\$7,500
<ul style="list-style-type: none"> Business Environment Site Surveying Structural Mechanics 	January	HK\$7,500
<ul style="list-style-type: none"> Information & Decision Making Management Pre-contract Studies 	May	HK\$7,500

Programme Structure (Year 2)

Module ⁺	Commencement	Tuition Fee [^]
<ul style="list-style-type: none"> Sustainable Construction Legal Studies Economics and Financial Management 	September	HK\$7,500
<ul style="list-style-type: none"> Building Design Services and Environment Health and Safety Studies English Communication Skills for Building 	January	HK\$7,500
<ul style="list-style-type: none"> Professional Practice & Project Business Environment II 	May	HK\$7,500
Elective modules:		
<ul style="list-style-type: none"> Construction Management or Contract Administration or Building Maintenance and Adaptation or Building Inspection and Maintenance Technology 		

[^] All tuition fees are subject to annual review and change without prior notice.

⁺ Course content is subject to review and changes without prior notice.

Mode of Delivery

The course is divided into six semesters in a 2-year duration and students are required to take two to three modules in each semester. Students have to complete all six semesters and each module consists of 22-33 face-to-face contact hours with lecturers.

Articulation Pathway

MSc Construction Project Management* (Registration Number: 252849)
(Part-time minimum 2 years)



BSc (Hons) Facilities Management* (Registration Number: 250793)
(Part-time minimum 15 months)



BSc (Hons) Construction Project Management*
(Registration Number: 251152)
(Part-time minimum 15 months)



Higher Diploma in Building Technology
(Part-time 2 years)



Diploma in Professional Studies (Building Technology)
(Part-time 1 year)



Part-time minimum 15 months

This programme admits students in September, January and May every year.

Introduction

This part-time programme which is conferred by the University of Central Lancashire, UK, has been launched since 2001. It covers a wide range of estates related aspects of sustainable business in order to support the core activities of an enterprise, including building and estates development, maintenance management and building services provision and control. The concept of sustainability has been incorporated in most of the modules in the restoration of our environment.

Professional Recognition



RICS



CIOB
THE CHARTERED INSTITUTE OF BUILDING



cabe
accredited course



BSOMES
Building Services Operation and
Maintenance Executives Society
楼宇设施操作及维护执行人员协会



HKICW



HKIIE
Registered in 1997



**HONG KONG
INSTITUTE OF CERTIFIED
PROPERTY MANAGERS**
香港物業管理師學會

- This programme is accredited by **Royal Institution of Chartered Surveyors (RICS)**, **The Chartered Institute of Building, UK (CIOB)**, **Chartered Association of Building Engineers (CABE)** and **Building Services Operation and Maintenance Executives Society (BSOMES)**. Graduates who fulfil the specified education with adequate working experience requirements are eligible to apply for the Membership of RICS, CIOB, CABE and BSOMES.
- This programme is also accredited by **The Hong Kong Institute of Clerks of Works (HKICW)**, **Hong Kong Institution of Incorporated Engineers (HKIIE)** and **Hong Kong Institute of Certified Property Managers (HKCPM)**. Graduates who fulfil specified education and professional development requirements are eligible for applying for Membership of HKCPM.

Programme Structure⁺

Students have to complete 6 taught modules and a dissertation in 4 semesters, the minimum length of study is 15 months and maximum length of study is 30 months.

Assessment

Coursework (50%) and Examination (50%) or Coursework/Examination (100%)

Dissertation

Initial Research Report, Poster Presentation and Final Report (100%)

Mode of Delivery

Each taught module consists of 24 or 36 face-to-face contact hours, including lectures and tutorials.

Semester One

- Facilities Management
- Project Analysis and Appraisal

Semester Two

- Maintenance Management
- Health and Safety Management or Building Conservation
- Dissertation (Part I)

Semester Three

- Construction Law
- Business and Entrepreneurship
- Dissertation (Part II)

Semester Four

- Dissertation (Part III)

(Dissertation is supported by two supplementary modules including "Communication & Research Methods" and "Information Technology Skills")

Entry Requirements

- Applicants should be holders of Higher Diploma in Building Technology awarded by HKCT with relevant industrial experience; or
- Holders of Higher Diploma/ Associate Degree/ Higher Certificate in Building Studies/ Facilities Management/ Estate Management/ Surveying or related discipline from local recognised institutions, with relevant industrial experience.
- Applicants should possess English proficiency level up to IELTS 6 or a pass in HKCT English Test or English as medium of instruction in previous postsecondary study or HKDSE English: Level 3 at Category A English language or equivalent, or
- Applicants should possess English Proficiency fulfilling the University's requirement.
- Applicants who do not satisfy the above academic entry requirement may be admitted at the discretion of the University.

Tuition Fee[^]

HK\$76,100 in 4 instalments

Administration Fee

HK\$1,650 Paid upon 1st instalment

Articulation Pathway

MSc Construction Project Management* (Registration Number: 252849)
(Part-time minimum 2 years)



BSc (Hons) Facilities Management* (Registration Number: 250793)
(Part-time minimum 15 months)



Higher Diploma in Building Technology
(Part-time 2 years)



Diploma in Professional Studies (Building Technology)
(Part-time 1 year)



[^] All tuition fees are subject to annual review and change without prior notice.

*It is a matter of discretion for individual employers to recognize any qualification to which these courses may lead.

*This programme is operated by Hong Kong College of Technology International Limited and awarded by University of Central Lancashire, UK.

Part-time minimum 15 months

This programme admits students in September, January and May every year.

Introduction

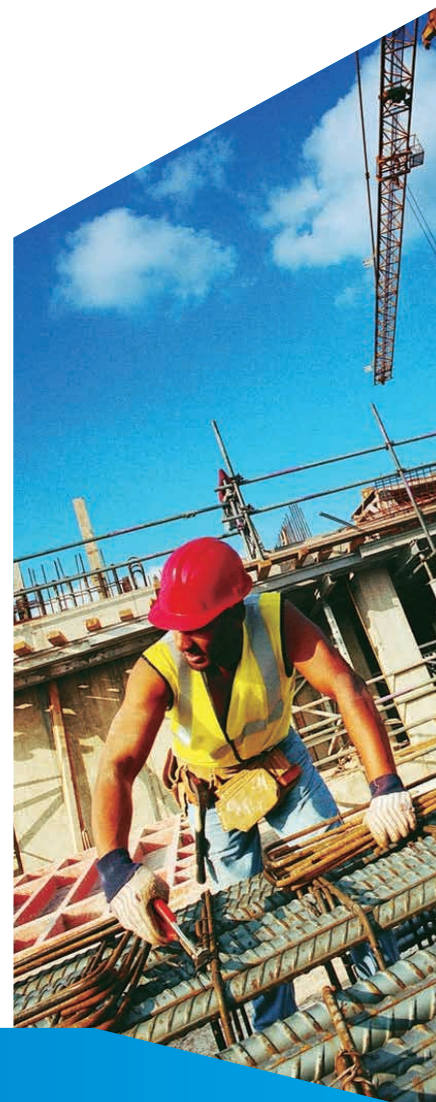
This part-time programme which is conferred by the University of Central Lancashire, UK, has been launched since 2004. It includes the study of quality management system, project management skills in application to the design and construction of buildings, the study of health and safety management in application to the construction process. The programme comprises three basic major components:

- The technology of construction.
- The management and organisation of resources.
- The legal framework set by society relating to contract, safety and environment.

Professional Recognition



- This programme is accredited by **Royal Institution of Chartered Surveyors (RICS)**, **The Chartered Institute of Building, UK (CIOB)** and **Chartered Association of Building Engineers (CABE)**. Graduates who fulfil the specified education and adequate working experience requirements are eligible to apply for the Membership of RICS, CIOB and CABE.
- This programme is also accredited by **Hong Kong Institute of Construction Managers (HKICM)**, **The Hong Kong Institute of Clerks of Works (HKICW)** and **Hong Kong Institution of Incorporated Engineers (HKIIE)**. Graduates who fulfill specified education and professional development requirements are eligible to apply for Membership of HKICM.



Programme Structure⁺

Students have to complete 6 taught modules and a dissertation in 4 semesters, the minimum length of study is 15 months and maximum length of study is 30 months.

Assessment

Coursework (50%) and Examination (50%) or Coursework/Examination (100%)

Dissertation

Initial Research Report, Poster Presentation and Final Report (100%)

Mode of Delivery

Each taught module consists of 24 or 36 face-to-face contact hours, including lectures and tutorials.

Semester One

- Project Management & BIM
- Project Analysis and Appraisal

Semester Two

- Performance Studies
- Health and Safety Management
- Dissertation (Part I)

Semester Three

- Construction Law
- Business and Entrepreneurship
- Dissertation (Part II)

Semester Four

- Dissertation (Part III)
(Dissertation is supported by two supplementary modules including "Communication & Research Methods" and "Information Technology Skills")

Entry Requirements

- Applicants should be holders of Higher Diploma in Building Technology awarded by HKCT with relevant industrial experience; or
- Holders of Higher Diploma/ Associate Degree/ Higher Certificate in Building Studies/ Facilities Management/ Estate Management/ Surveying or related discipline from local recognised institutions, with relevant industrial experience.
- Applicants should possess English proficiency level up to IELTS 6 or a pass in HKCT English Test or English as medium of instruction in previous postsecondary study or HKDSE English: Level 3 at Category A English language or equivalent, or
- Applicants should possess English Proficiency fulfilling the University's requirement.
- Applicants who do not satisfy the above academic entry requirement may be admitted at the discretion of the University.

Tuition Fee[^]

HK\$76,100 in 4 instalments

Administration Fee

HK\$1,650 Paid upon 1st instalment

Articulation Pathway

MSc Construction Project Management* (Registration Number: 252849)
(Part-time minimum 2 years)



BSc (Hons) Construction Project Management*
(Registration Number: 251152)
(Part-time minimum 15 months)



Higher Diploma in Building Technology
(Part-time 2 years)



Diploma in Professional Studies (Building Technology)
(Part-time 1 year)



[^] All tuition fees are subject to annual review and change without prior notice.

*It is a matter of discretion for individual employers to recognize any qualification to which these courses may lead.

*This programme is operated by Hong Kong College of Technology International Limited and awarded by University of Central Lancashire, UK.



Part-time minimum 2 years

This programme admits students in September, January and May every year.

Introduction

This programme seeks to develop the skills of postgraduate managers and engineers in the following areas:

- Enable graduates in management and engineering disciplines to develop their project management skills.
- Focus upon project planning and control methods within the construction project management process.
- Extend knowledge of innovative tools, techniques and methodologies in the resolution of complex problems.
- Develop personal, interpersonal and project-personnel skills.
- Provide the opportunity for students to complete a range of modules that are relevant to their working environment and general interest in the context of international project management.
- Develop the student's research methods and applications.

The course comprises a total of nine modules including triple module on dissertation which is the final phase of study and promotes philosophical approaches to research and investigation. Students can select their own research focus for the dissertation and this commonly relates to topic areas that are both of personal interest and helpful for career development.

Professional Recognition



This programme is accredited by **Chartered Institute of Building, UK (CIOB)** and **Chartered Association of Building Engineers (CABE)** and **Association for Project Management (APM)**. Graduates who fulfil specified education and professional development requirements are eligible to apply for Membership of CIOB, CABE and APM.

Programme Structure⁺ (Year 1)

- Health and Safety Management
- Project Team and Leadership Development
- Strategic Project Management
- Project Planning, Control and Analysis
- Risk and Value Management
- Advanced Construction Technology

Programme Structure⁺ (Year 2)

- Master's Dissertation (triple module)

Entry Requirements

- Applicants should either have at least a bachelor's degree in building construction related discipline with evidence of industry experience or have equivalent experience or training, normally from the work environment. The previous degree should have been completed in English.
- Any applicants not meeting the standard entry requirements will be considered via the University recognition of prior learning (RPL) process.

Tuition Fee[^]

HK\$94,800 in 4 instalments

Administration Fee

HK\$1,650 Paid upon 1st instalment

+ Course content is subject to review and changes without prior notice.

[^] All tuition fees are subject to annual review and change without prior notice.

*It is a matter of discretion for individual employers to recognize any qualification to which these courses may lead.

*This programme is operated by Hong Kong College of Technology International Limited and awarded by University of Central Lancashire, UK.



Part-time minimum 2 years

This programme admits students in September every year.

Introduction

The programme is conferred by Leeds Beckett University, UK. Health and safety is an integral and important part of any organization i.e. not only limited to the health care industry. Whether you work as health and safety manager, risk manager, operations manager, office manager, engineer or technician, you will be involved with ensuring a safe working environment for everyone. This course will develop your knowledge of how different organisations use varying levels of safety procedures and you will assess their impact on the whole company.

Entry Requirements

Standard Entry

- A second class honours Bachelor's degree in Health and Safety (e.g. safety management), OR
- A second class honours Bachelor's degree in another discipline with evidence of an aptitude for health and safety (e.g. curriculum covers health and safety studies in the core modules); OR
- Minimum 5 years of relevant work experience or training for applicants without the required academic background (e.g. assistant safety officer)

AND

- English Language proficiency requirement
- IELTS 6.0, with no skills below 5.5; or
- HKDSE English Level 4, with no component/paper below Level 3.
- Remark: If applicants have completed a Bachelor's degree taught and assessed in English, they will be considered as meeting the above English language requirement.

Non-standard Entry

- Any applicants not meeting the standard entry requirements will be considered via the home institution's Recognition of Prior Learning (RPL) process.



Programme Structure⁺ (Year 1)

- Health and Safety Practice
- Quantitative Risk Analysis
- Sensible Risk Management
- Occupational Health and Wellbeing
- Applied Research Methods
- Professional Practice and Development

Programme Structure⁺ (Year 2)

- Research and Practice Development
- Ergonomics

Assessment

Examination, Coursework, Presentation (as per the requirement of each module), Master's Dissertation

Mode of Delivery

Each taught module consists of face-to-face lectures and tutorials. All classes are scheduled on weekday evenings, Saturdays and/or Sundays.

Tuition Fee[^]

HK\$93,780 in 4 instalments

Administration Fee

HK\$1,650 Paid upon 1st instalment

+ Course content is subject to review and changes without prior notice.

^ All tuition fees are subject to annual review and change without prior notice.

* It is a matter of discretion for individual employers to recognize any qualification to which these courses may lead.

* This programme is operated by Hong Kong College of Technology International Limited and awarded by Leeds Beckett University, UK.



Lecture Venue : HKCT Mong Kok East Campus
HKCT Jordan Learning Centre

Application Enquiries : 2276 8514 / 2926 1222

Website : <https://www.hkct.edu.hk/cie>

Online application : <https://www.hkct.edu.hk/uchoice>

Programme Details



Application



Campus:

HKCT Mong Kok East Campus: 14 Princess Margaret Road, Ho Man Tin, Kowloon
HKCT Jordan Learning Centre: 11/F, Wing On Kowloon Centre, 345 Nathan Road, Kowloon

^ It is a matter of discretion for individual employers to recognize any qualification to which these courses may lead. This programme is operated by Hong Kong College of Technology International Limited and awarded by Leeds Beckett University, UK.

* It is a matter of discretion for individual employers to recognize any qualification to which these courses may lead. This programme is operated by Hong Kong College of Technology International Limited and awarded by University of Central Lancashire, UK.

-HKCT reserves the right of cancellation of programme due to insufficient enrolment number or special circumstances and the right of granting offer.